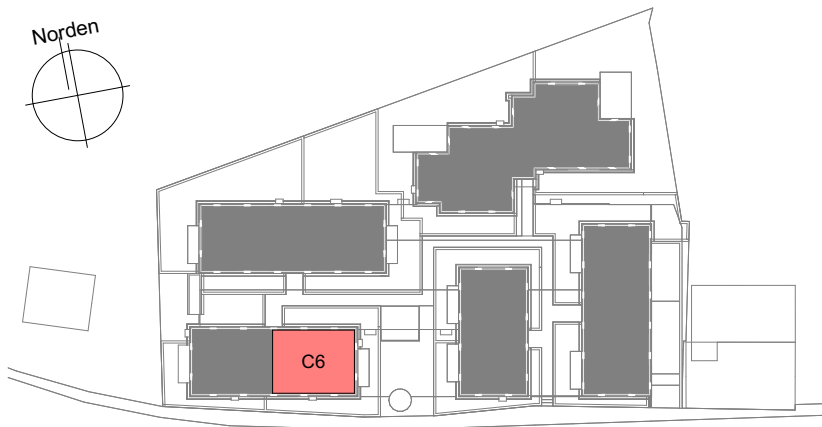


Norden



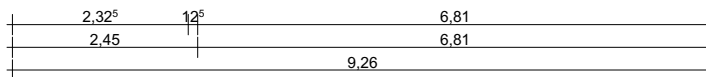
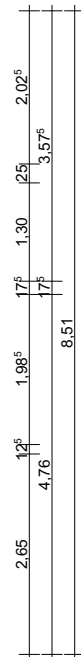
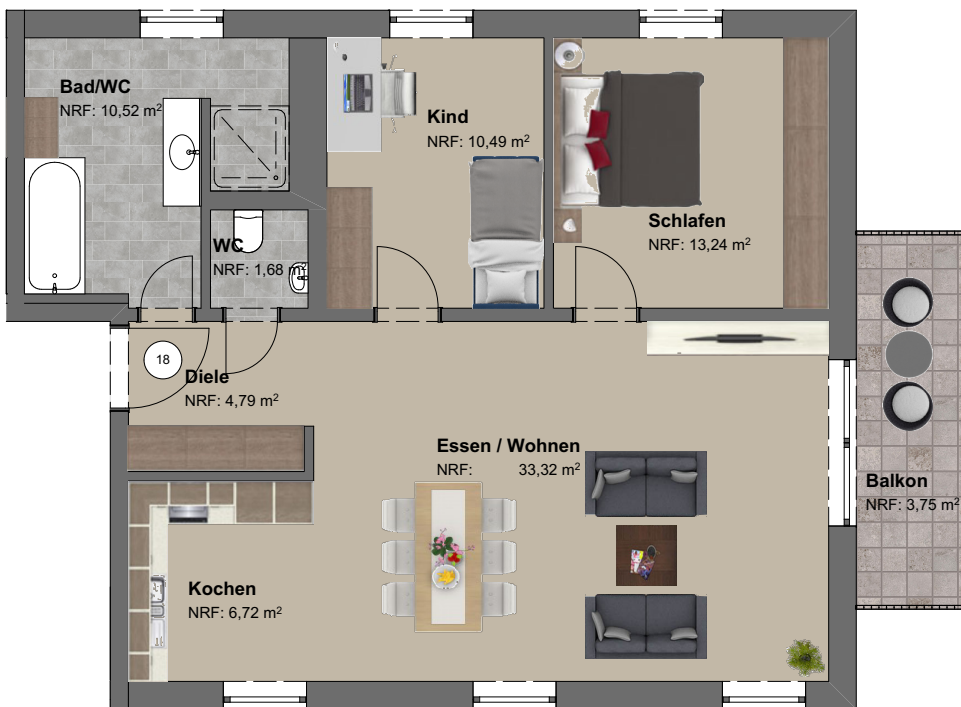
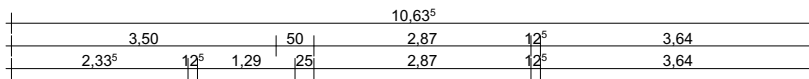
Lage | Übersichtsplan

WHG C6

Haus C

Diele	4,79 m ²
Kochen	6,72 m ²
Essen / Wohnen	33,32 m ²
Schlafen	13,24 m ²
Kind	10,49 m ²
Bad/WC	10,52 m ²
WC	1,68 m ²
Balkon	3,75 m ²
Wohnfläche gesamt m²	84,51 m²

Flächen | Größe



Grundriss | M 1:100