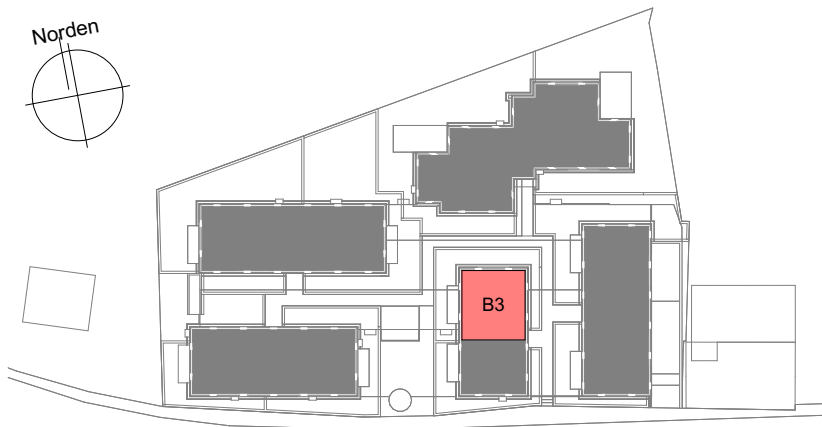


Norden



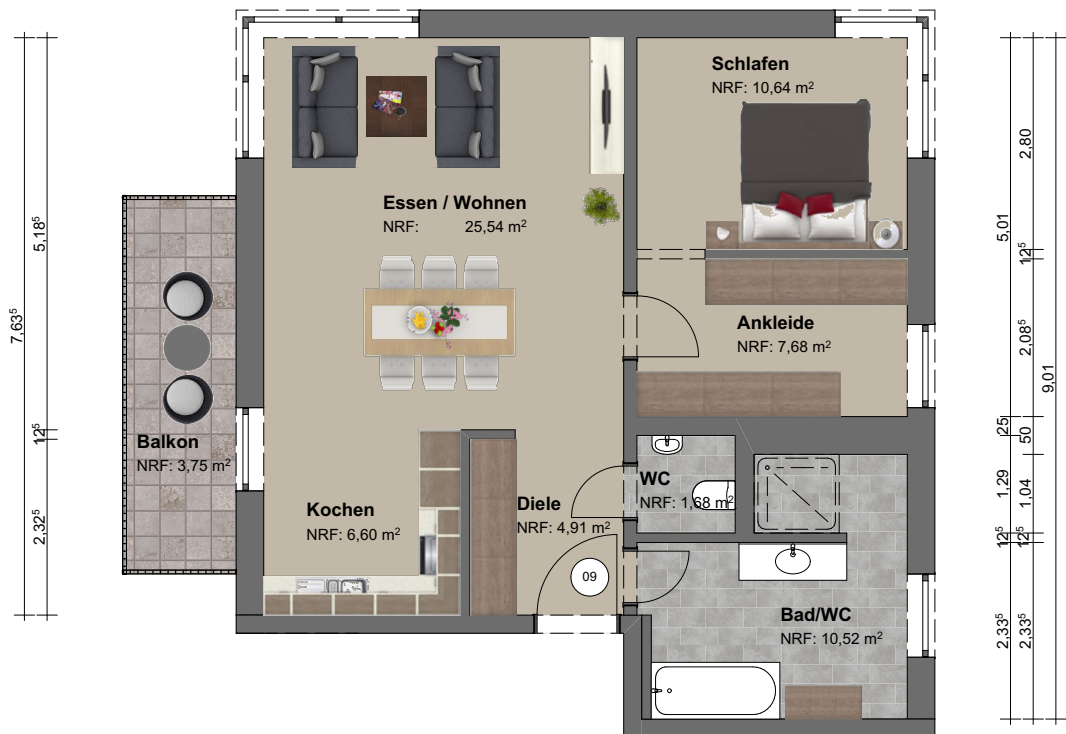
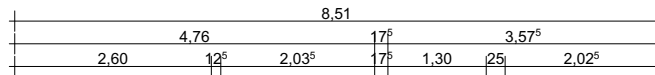
Lage | Übersichtsplan

WHG B3

Haus B

| | |
|--|----------------------------|
| Diele | 4,91 m ² |
| Kochen | 6,60 m ² |
| Essen / Wohnen | 25,54 m ² |
| Schlafen | 10,64 m ² |
| Ankleide | 7,68 m ² |
| WC | 1,68 m ² |
| Bad/WC | 10,52 m ² |
| Balkon | 3,75 m ² |
| Wohnfläche gesamt m² | 71,32 m² |

Flächen | Größe



Grundriss | M 1:100